

# SKI\*GO

2012/13

SEE OUR NEW APP  
IN THE APP STORE



[www.ski\\*go.se](http://www.ski*go.se)

PHOTO: MARTIN FRYKLUND



CHRISTER MAJBÄCK

With the Skigo waxes I am incredibly pleased and confident about the entire line. That we are the most used wax brand at the National Team Level is a strong testament that the waxes are at the highest and best level. The clarity and simplicity of the range with its high quality ensures beginners to elite racers can meet their requirements.

I have a lot of new items this year with our waxing accessories such as roto-brushes, structuring tools, special waxing irons and more.

In August 2011 I started a project with the Swedish National Winter Sports Center (NVC) and scientists in carbonfiber technology for developing the world's best pole. This year's Racing pole has the best test results in the following areas: swing, weight, power transfer and impact resistance. These tests were made at NVC's independent test center in Östersund. In addition to shaft improvements I have re-shaped the handle and strap. I've extended these improvements to the whole Skigo pole line. With pride I can announce "Sweden's fastest" skier and the triple Vasaloppet winner are on these Racing poles this year; both Teodor Pettersson and Jörgen Brink have chosen Skigo!

Roller skiing has become great summer training and I see a growing demand for good, affordable products. My goal with our roller skis is to create the market's most winter ski like experience on roller skis. It's with great pleasure that I note we have succeeded in this and feedback has confirmed this especially after Daniel Richardson chose Skigo roller skis. "This has been the most ski-like feeling I have ever gotten on roller skis, and this kicked off my winter – thanks to the longer shaft", says Daniel Richardson.



We have a new series of roller skis in both aluminum and carbon at different price ranges to meet the market demand.

Gloves are a fantastic segment for us that continue to grow and this year we have a real innovation which can be found in the catalogue.

More exciting news: our loppet team "TEAM Skigo" will participate in all World Loppet races this winter. The TEAM has six skiers who will naturally use Skigo completely. Results and wax recommendations from the World Loppet races will be posted on our website along with comments and responses from our team.

Finally I want to thank all skiers, racers and enthusiasts, for your confidence in Skigo products. I still spend many hours and kilometers in the tracks, but most of my time is now product development. Continue to have fun at your own level. See you on the trail this winter!

Yours sincerely, Christer Majbäck


  
CHRISTER MAJBÄCK

**SKIGO**

# INDEX

JÖRGEN BRINK  
SWEDEN





**EASY LINE CONCEPT**

1-2

**GLIDE WAX TOPPERS**

3-4

**GLIDE WAXES**

5-6

**KICK WAXES**

7-10

**WAX TOOLS**

11-14

**BOXED SETS**

15-18

**WAXING BENCHES**

19-20

**POLES/POLE PARTS**

21-24

**ROLLERSKIS**

25-26

**GLOVES**

27-28

**CLOTHING**

29-32

**EXTRAS**

33-34

**INFORMATION**

35-42

# EASY LINE

TAR DIG SNABBARE UT I SPÄREN

## GLIDE

2012/13



**EASY  
GLIDE**

### **EASY GLIDE**

Quick wax that makes it easier to wax.  
Apply and Go - can it get any easier?

#### **How to use:**

1. Apply a thin layer on the glidezone.  
Leave to dry for 3 minutes

2. Brush the glidezone with a nylon brush,  
done!

**READY TO GO!**

Easy Glide saturate and protect the base of the ski. EasyGlide contains no solvents that dry out and harden the base.

Don't let your EASY GLIDE bottle freeze.  
60ml, Universal -10/ +10 °C

### **EASY GLIDE PACK**

Contains: EASY GLIDE + a  
nylon brush



**KEEP FROST-FREE**

**EASY GLIDE**

**CONTAINS NO SOLVENTS**

# CONCEPT



## GRIP

### EASY GRIP PACK

#### How to use:

1. Use the sandpaper attached on the scraper to make the kickzone rough.
2. Apply EASY WAX - (for minus degrees) or + (for temperatures above freezing). Drag the chosen wax can back and forth in the kick zone until there is a thick layer.
3. Turn the can around and smooth the wax with the cork.
4. The ski is ready to use..



EASY GRIP PACK  
contains: + and - kick wax and  
clean scarper with sandpaper





# GLID WAX

FOR THE BEST POSSIBLE GLIDE

## FLUORO SOLID/POWDER



### CM<sup>10</sup>

CM10

Our fluoro solid for racing. For conditions with old, coarse snow and warm temperatures. Prepare the ski first with graphite and matching HF glide. Gently rub a thin layer of CM10. For distances over 5km warm in with a clean waxing iron at 160 degrees, otherwise cork in with a natural cork. Let rest 15 minutes before horsehair brushing thoroughly.

## FLUORO SOLID

Cork in with natural cork. Instructions on page 40.



Solid	snow typ	Temp C°	Humidity
C22 solid	all	+20 to -4	60 - 100%
C44/7 solid	all expect new snow	+3 to -9	60 - 100%
C105 solid	fine/new snow	+1 to -20	70 - 100%
C110 solid	all	-10 to -20	70 - 100%

## FLUORO POWDER

**FACT**

The Fluid Glides work best in old and aggressive snow. Otherwise use the Powder glides. The durability is equivalent. Fluoro Block can be used up to 5km or with Alpine racing.



Powder	snow typ	Temp C°	Humidity
C22 powder	all	+1 <	-
C44/7 powder	granular snow	+1 to -14	-
C105 powder	fine/new snow	+1 to -15	-
C110 powder	all	-10 to -20	-

Widely used by all teams. Apply with a waxing iron. Waxing instructions on page 40.



# TOPPERS

## FLUORO FLUID



Fluid	snow type	Temp °C
C22 fluid	all	+15 to -2
C44/7 fluid	coarse, aged snow	+2 to -9
C55/C99 fluid	fine/new snow	-2 to -10
C105 fluid	fin/old snow	-4 to -15
CM 10 fluid	old, coarse snow	-2 to +20

CM10 Fluid: for normal races let dry then cork and brush; for sprints apply, let dry and go.

Advanced fluoro suspensions. Same durability as powders.

Waxing instructions on page 40. 30ml bottles.

## COLD POWDER



Special synthetic waxes for abrasive snow and very cold conditions. For just below freezing to -25C/-13C. Apply as a normal paraffin wax. Underlayer of Graphite XC/LF or Green LF/HF. 60g canisters.

Powder	snow type	Temp °C	Humidity
P16	artificial / aggressive	-4 to -25	65-100%
C75	older snow	-7 to -20	40-70%
C380	dry & abrasive snow	-7 to -20	0-60%

## ALPINE SPECIALTY



Line	snow type	Temp °C	Humidity
Yellow AL	all	+20 to -1	60 - 100%
Orange AL	new to old	+1 to -5	60 - 100%
violet AL	aggressive	-7 to -20	60 - 100%
C22 AL solid	all	+20 to -2	60 - 100%
C44 AL solid	all except new snow	+3 to -9	60 - 100%
C105 AL solid	new & fine snow	-7 to -20	70 - 100%
C380 AL	dry & abrasive snow	+20 to -2	0 - 60%
P16 AL	corn snow/aggressive	+3 to -9	65 - 100%



# GLID WAXES

FOR THE BEST POSSIBLE GLIDE

## GLIDE XC



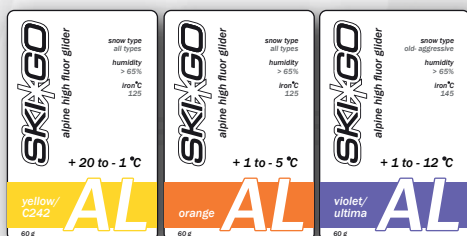
## GLIDE LF



## GLIDE HF



## GLIDE ALPINE



TEODOR PETERSON  
SWEDEN

## XC, LF, AL — GLIDE SERIES

XC - standard glide series  
LF - low fluoro glide series  
AL - alpine glide series

### XC

Standard (non-fluoro) glide wax for all temperatures and snow types. For humidity 0-100%. Spread and warm into the ski base with a waxing iron. 60g and 200g packages.

### LF

A low fluoro glide wax for all snow types with humidity 50-70%. Spread and warm into the ski base with a waxing iron. For training and competition. 60g and 200g packages.

### HF

Glide waxes with a high fluoro content intended for all snow types with humidity >65%. Spread and warm into the ski base with a waxing iron. For racing. These HF waxes have lots of R&D and under certain conditions can perform better than fluoro powders, solids or fluids. 45g and 200g packages.

+ 20 to - 1 °C

+ 1 to - 5 °C

+ 1 to - 5 °C

- 1 to - 12 °C

- 3 to - 10 °C

- 7 to - 20 °C

any

yellow/ C242  
all types of snow

orange  
new to older snow

red  
grainy - artificial snow

violet/ ultima  
older - aggressive snow

blue  
newsnow

green  
all types of snow

graphite  
all types of snow

## HF — GLIDE SERIES

HF - high fluoro glide series

+ 20 to - 1 °C

+ 1 to - 5 °C

+ 1 to - 5 °C

- 1 to - 12 °C

- 3 to - 10 °C

- 7 to - 20 °C

yellow/ C242  
all types of snow

orange  
all types of snow

red  
grainy - artificial snow

violet/ ultima  
older - aggressive snow

blue  
newsnow

green  
all types of snow



# KICKWAX

## KICKWAX BASE/XC



## KICKWAX LF



## KICKWAX HF



### TOUR PACK

Starter set with three kickwaxes and a cork.





**NEW!!**

**ECC HELPS YOU PEEL  
THE WAX TIN.**



SEE WAX TABLE ON  
PAGE 38.

Temperatur	Nysné	Grav snö / skare
+10 °C	Violet XC Kister (botten) + Orange XC Kister all. Gul HF Kister	Violet XC Kister (botten) + Orange XC Kister (botten) med Gul HF Kister all. Gul HF Kister
+5 °C	Se oven	Violet XC Kister (botten) + Orange XC Kister (botten) all. Gul HF Kister
+2 °C	HF gul all. Violet XC Kister (botten) + Orange XC Kister (botten) all. Gul HF Kister	Violet XC Kister (botten) + Orange XC Kister (botten) all. Gul HF Kister
0 °C	Bla XC Kister (botten) + Violet HF Kister all. Gul HF Kister	Violet XC Kister (botten) + Orange XC Kister (botten) all. Gul HF Kister
-1 °C	Bla XC Kister (botten) + Violet HF Kister all. Gul HF Kister	Violet XC Kister (botten) + Orange XC Kister (botten) all. Gul HF Kister
-2 °C	Bla XC Kister (botten) + Violet HF Kister all. Gul HF Kister	Violet XC Kister (botten) + Orange XC Kister (botten) all. Gul HF Kister
-3 °C	Se oven	Violet XC Kister (botten) + Orange XC Kister (botten) all. Gul HF Kister
-5 °C	Bla XC Kister (botten) + Violet HF Kister all. Gul HF Kister	Violet XC Kister (botten) + Orange XC Kister (botten) all. Gul HF Kister
-8 °C	Bla XC Kister (botten) + Violet HF Kister all. Gul HF Kister	Violet XC Kister (botten) + Orange XC Kister (botten) all. Gul HF Kister
-12 °C	Bla XC Kister (botten) + Violet HF Kister all. Gul HF Kister	Violet XC Kister (botten) + Orange XC Kister (botten) all. Gul HF Kister
-15 °C	Grøn XC	Grøn XC Kister (botten) all. Gul HF Kister

## BASE WAX

Applied in abrasive/rough snow conditions before to help regular waxes stay in the kick zone. It resists blending with top kickwax layers.

## XC

### XC yellow, +5 / -1 °C

As the snow becomes more coarse than for orange. Try before moving to klister.

### XC orange, +3 / -2 °C

For variable conditions around freezing. Former name: Skigo Yellow

### XC red, 0 / -2 °C

At freezing and just below. Good for improving grip with purple or blue in the 10-15cm just ahead of the binding.

### XC violet, -1 / -9 °C

All snow types. Works even outside range listed on tin. Very versatile.

### XC blue, -3 / -10 °C

Very durable. Works well in coarse snow. Can be warmed in as an base layer for warmer waxes.

### XC green, -7 / -20 °C

All snow types in cold conditions. A good overlayer on other kickwax with penetrating snow.

## LF

### LF orange, +3 / -2 °C

When orange XC is not enough. Resists dirt pickup and icing.

### LF violet, 0 / -6 °C

Can be used down to -8C/18F. All snow types.

## HF

### HF yellow, +5 / -1 °C

For all snow conditions. Very resistant to icing.

### HF red, +1 / -3 °C

All snow types. A distinct soft grip. Contains high amounts of a new fluoro. Very resistant to icing. Can be used to -10C/+27F with coarse snow. Generously apply 4-6 layers.

### HF violet, -2 / -15 °C

For new and fine structured snow. High humidity. Excellent cover for other waxes.

### HF blue, -1 / -20 °C

All snow except new snow. Functions excellently across its entire temperature range. A soft and distinct grip. Contains high amounts of a new fluoro. Generously apply 4-6 layers.

# KLISTER

## KLISTER XC



### XC ORANGE + 10 TILL + 3 °C

For slippery track and when very wet regardless of snow type.

50..37F



### XC RED + 5 TILL + 1 °C

When snow changes from frozen to wet. Mix with universal klister when snow freshly falling.

41..34F



### XC SILVER + 3 TILL - 1 °C

Also for one degree below and one degree above freezing with difficult waxing circumstances. Good to mix with red and orange klister. Very resistant to dirt. 41..30F



### XC UNIVERSAL + 3 TILL - 4 °C

A tar based klister for mixed snow conditions around freezing. Mixed snow includes new snow over icy snow.

37..32F



### XC VIOLET + 3 TILL - 4 °C

Good alone or as an underlayer to kick wax or colder klister until the snow starts to become wet. Good ironed in as a binder.

37..25F



### XC BLUE - 2 TILL - 10 °C

Very durable. For frozen and crusty snow conditions. When track is glazed due to thaw-freeze cycle.

28..14F

## KLISTER HF



### HF GUL + 20 TILL + 3 °C

Fluoro-based klister. All snow conditions even with glazed tracks.

68..37F



### HF VIOLETT + 2 TILL - 2 °C

Fluoro-based klister for grainy snow.

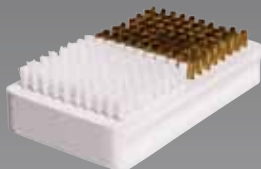
36..28F

FINN HÅGEN KROGH  
NORWAY

DANIEL RICHARDSSON  
SWEDEN



# WAXING TOOLS



## COMBI BRUSH (BRASS / NYLON)

Brass for cleaning glide zones and nylon to clear after scraping to remove final excess wax. If you only purchase one brush then this is the brush.



## HORSEHAIR

Opens up most of the base structure (finer bristles). Brush back and forth.



## FINE STEEL

Brush 2-4 strokes after using horsehair. Opens up the finest structure. Also for cleaning the base with many strokes.



## NYLON

For polishing the base shiny after brushing with fine steel. Brush 10-20 times to remove loose residues on the surface and polish. Can be used alone if using only paraffin waxes for training or recreation



## FINE NYLON

A brush with very fine bristles for final polishing to open the microstructure.

NEW!!



## FIBERTEX

For cleaning the base without modifying the structure.





### ROTO-CORK

To warm fluoro waxes into the ski. The cork's heat is absorbed by the wax.

NEW!!



### NYLON ROTOBRUSH

Nylon bristles used for final polishing of the ski base.

NEW!!



### STEEL ROTOBRUSH

Fine steel bristles for opening the fine structures and cleaning the glide zones.

NEW!!



### COMBI ROTOBRUSH

HORSEHAIR/NYLON

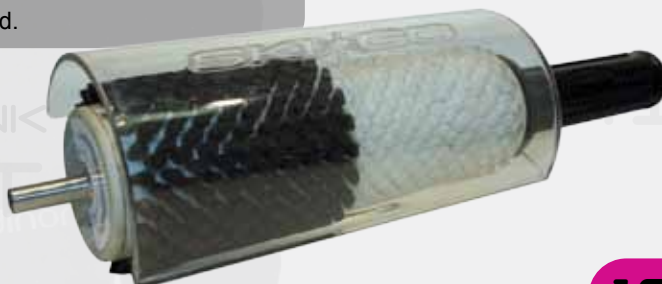
Combi brushed used after scraping. Start with horsehair, then switch to nylon. 200mm wide.

NEW!!

### ROTO HANDLE

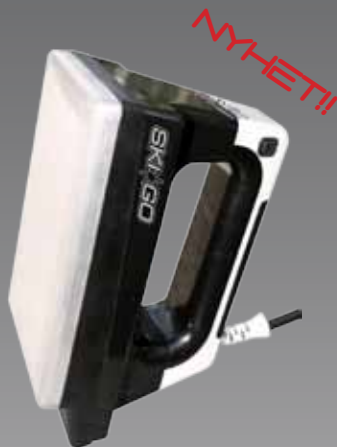
1. Use a 'light hand' when rotobushing (bristle tips only)
2. Use a variable speed power drill: Steel 1000-2000 rpm; Cork/Nylon/Horsehair 1000-4000 RPM
3. For Nordic, Alpine and Snowboard.

NEW!!



JÖRGEN BRINK

HAT



#### **WAX IRON DIGITAL POWDER**

The thicker base gives very high and even heat. Proceed to use at 220°C when the display shows 220°C is reached. This is the only setting. Work quickly across the ski.

#### **WAX IRON DIGITAL DIGITAL**

Adjustable heat between 0 - 180° C by pressing the + or - buttons. When display shows the desired temperature and green light is on then the heat setting is ready.

#### **WAX IRON BASIC**

Adjustable from 0 to 165 ° C by rotating the dial.

#### **SERVICE PACKS**

For teams and high volume users 1kg size in Soft, Blue and Violet.



#### **CLEANING AND STORAGE**

Works well for base saturation and cleaning. Low melting temp.



#### **WAXING APRON ONE SIZE**



### WAX REMOVER

Odour free and environmentally friendly.  
Available in two sizes.  
1000ml / 250ml

### FIBERLENE

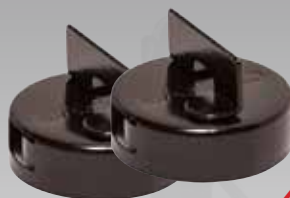
Available in two sizes.  
14.5cm x 25m / 28cm x 40m



**NATURAL KORK**  
Two sizes available.



**SYNTHETKORK**



### ECC

Helps you tear the kickwax tin.  
Forget tearing with cold fingers  
or destroying your teeth.

**NEW!!**

### GROOVE SCRAPER



**PLASTIC SCRAPERS**  
3 mm/ 5 mm



### STEEL SCRAPER



### KLISTER SCRAPER



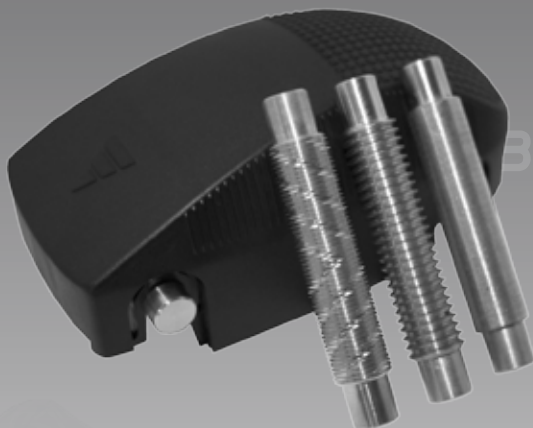
# SET AND BOXES

## ROLLER SET

A complete starter set that you can complement when need.

Includes:

- 1 handle with support roller
- 1mm V-structure (new snow)  
temp +2 to -15 ° C (+5 to +35.6 ° F)
- 2mm straight  
temp +15 to -6 ° C (+59 to 21.2 ° F)
- 0.3 mm straight  
temp -20 to +2 ° C (-4 to +35.6 ° F)



## MAJAN PACK

4 waxes to cover all conditions over the season.

Includes:

- HF yellow +5 to -1° C / 39..32F
- HF red +1 to -3° C / 24..27F
- HF violet -2 to -15° C / 25..5F
- HF blue -1 to -20° C / 30..-4F

## TOUR PACK

A good starter pack with 3 waxes covering a wide temperature range.

Includes:

- XC Yellow +5 to -1C / 41..30F
- XC Red 0 to -2C / 32..28F
- XC Blue -3 to -10C / 27..14F
- 1 synthetic cork





### **VASA BOX**

#### **Glide**

- Yellow XC
- Violet XC

#### **Kickwax**

- White base
- Orange XC
- Blue XC

#### **Klister**

- White Universal
- Violet XC

#### **Scrapers**

- Klister Scraper
- 3mm scraper
- Groove scraper
- Waxremover, 250ml
- Fiberlene
- Combi Brush
- Synthetic cork

A PERFECT CASE FOR SOMEONE GOING TO THE VASALOPPET.



### **EASYLINE BOX**

#### **Glider**

- Easy glide
- Nylon brush

#### **Kickwax**

- Easy grip +/-
- Klister Scraper





#### ROTO BOX

- Handle
- Case
- Brushes
  - Combi Brush (nylon/Horsehair)
  - Roto Crok
- 3 open slots for more brushes

NEW!!



#### WORK BOX

- Waxing iron
- Three brushes: Nylon, horsehair and combi
- Groove scraper
- 5mm scraper



#### ADVANCED WAX BOX

New design with room for all of your waxes, bottles and accessories. Handy to take with when situation demands it.

Waxes not included!

NEW!!



NIKLAS DYRHAUG  
NORWAY

# WAX TABLE



HANDLE

NEW!!

## WAX TABLE

Wax Table with handle. For those who want a real and stable wax stand with large work surfaces. Room for two pairs of skis. The profiles are removable if you want to free up space or for travel. Legs and shelf fold away. Includes a handle at the side making it easy to carry.



### DOUBLE WAX BENCH

Room to work two skis with a small table to hold waxes and tools. Adjustable profiles and adjustable ski clips. Legs fold for portability.



### SINGLE WAX BENCH.

Adjustable profile and adjustable ski clip with folding legs for portability.



### COMPACT WAX BENCH

The ultimate wax bench for travel. Erect on any table. Very portable.

NEW!!



# POLES

## RACE

This year we have cracked the code to the next generation of poles. Test them this winter so you know yourself.

We had the Swedish Winter Sports Centre in Östersund develop our new race pole and made numerous tests to achieve results higher than anyone else has done in the past. Now we are there with the combination of weight, stiffness, impact resistance, swing and many other important factors. Now we proudly present this year's racing pole.

We also give a hearty welcome to Teodor Peterson to the Skigo community. Teodor is skiing with our racing poles as well as our roller skis. He is a strong new skier with Skigo. Meanwhile, our big star, Jörgen Brink, is trying to become the first to win the Vasaloppet four years in a row - good luck Jörgen!



**TEODOR PETERSON**  
**SWEDEN**

1st World Cup Sprint 2011/2012



**JÖRGEN BRINK**  
**SWEDEN**

3 Vasaloppet wins in a row, with a record in 2012.





JÖRGEN BRINK  
SWEDEN

ELIT



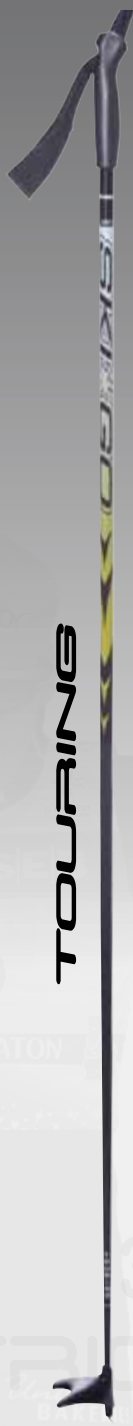
VASA



XC



TOURING



ROLLER 80



ROLLER 40





# SKI POLE INFORMATION

## RACE

Cork handle with PRO strap.  
100% HM Carbonfibre. Stiffer  
and lighter thenELIT. 8mm basket.  
Lengths 130-170cm.

## ELIT

Cork handle with racing strap.  
100% Carbonfibre. Lengths 130-  
170cm.

## VASA

Cork handle with racing strap.  
50% Carbonfibre & 50%  
Fibreglass. Lengths 130-170cm.

## XC

Cork handle with racing strap.  
10% Carbonfibre & 90%  
Fibreglass. Lengths 130-160cm.

## TOURING

Plastic grip with loop strap. 100%  
Fibreglass. Lengths 80-155cm.

## ROLLER 80

Extra strong pole with 80%  
Carbonfibre. Fluorescent shaft  
that makes you more visible on  
the road. Cork handle and racing  
strap. 8mm basket. Lengths 130-  
170cm.

## ROLLER 40

40% Carbonfibre. Cork handle  
with racing strap.

# SKI POLE PARTS

## HANDLES



## BASKETS



## SKI POLE STRAPS

Sizes S, M and L.

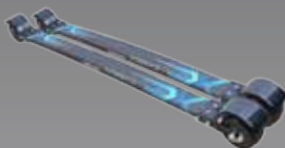


## SKI POLE CASE



# ROLLERSKIS

## CLASSIC



### CARBON XC

Carbon body makes the ski light and minimizes vibrations. The ski is 5-6 cm longer than existing roller skis and has a camber that gives the right ski feeling. Excellent tracking. Available in two cambers: <75kg and >75kg.

NEW!!



### ALUMINIUM XC

Made of strong lightweight aluminum. Excellent tracking. Pre-drilled binding holes.

NEW!!



## SKATE

### SKATE NS

Skate skis of carbon in the same high finish as the classic. Superb winter ski feeling.



NEW!!



ROLLER SKI BAG



CARBON FERRULES



Light and very durable ferrules.  
Carbon reinforced. 7, 8, 9,  
10mm.

PLASTIC FERRULES



Plastic ferrules in 8 & 10mm  
sizes



SKATE WHEELS

1 PAIR



CLASSIC FRONT WHEELS

1 PAIR



CLASSIC FRONT WHEELS

1 PAIR



# GLOVES

## THERMO

A Thinsulate lined glove (70g) for slightly colder temperatures. The lycra fit glove has a neoprene cuff for additional warmth and a Clarino palm. Fingertips are reinforced with additional fleece. Available in black (Men's Sizes) and blue (Women's Sizes).

## TRAINER

A supple glove of windproof lycra and a synthetic palm with a neoprene cuff. Lined with Thinsulate to make it slightly warmer than the X-Skin. Ideal for training.

## TOURING

An affordable glove with four-way stretch. The synthetic palm with the neoprene cuff is a comfortable fit.

## HUMMER

A very warm, wind-tight three-finger glove. Thinsulate lining. Clarino palm and knitted cuff. A glove for really cold days. Also perfect for people standing out on the ski course.

## ROLLER

A very light, thin glove with breathable mesh back. The Clarino palm is padded for comfort while roller skiing.

## JUNIOR

A kid and junior glove with Thinsulate lining. Synthetic leather palm and neoprene cuff.





### FLEXIBLE — 2 IN 1

Based on the X-skin gloves this is a thin and supple racing glove. Windproof top of Lycra. Enhanced finger design. Neoprene cuff and very thin clarion palm for good contact with the pole. A top glove with excellent breathability. The major news is that we have added a super thin cover for the fingers that provides an incredible shield against wind, water and cold that can tuck away.

### X-SKIN

A very thin and flexible race glove. Windproof top in lycra. Enhanced finger design. Neoprene cuff and very thin clarion palm for good pole contact. A top glove with excellent breathability. Available in Women's sizes (blue) and Men's Sizes (Black)



ØYSTEIN "PØLSA" PETTERSEN  
NORWAY



PHOTO: AARO LAIHO

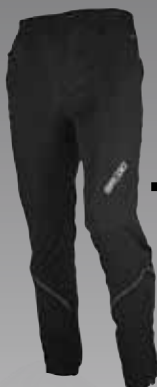
# CLOTHING

## MEN



### SOFTSHELL JACKET

A softshell jacket with wind-resistant front, stretch panels on the back and sleeves for excellent fit and ventilation. Reflective areas on the front. Form fitting with elasticated cuffs to reduce drag.  
Mens: black, blue, red



### SKIGO MICROGRID SET

This windbreaker set with light functional fabric comes with several technical solutions.

The jacket and pants are both fitted with a stretch material to give a firm, close fit and good breathing capacity across the entire back. The pants have a windproof front. Excellent freedom of movement.  
Mens: black, blue, red.



### SOFTSHELL PANTS

A softshell pant with windproof front. Full zippers along each leg allows for easy & quick changes. Knees are vented, waist can be cinched, high back to keep out wind. Form fitting. Comes with removable suspenders. Technically complete ski pants.



### MICROGRID VEST

Has a windproof front with full lycra stretch back for best fit & breathability. Reflective areas front & back for visibility. Reinforced seams for durability.

# WOMEN



## SOFTSHELL JACKET

A softshell jacket with wind-resistant front, stretch panels on the back and sleeves for excellent fit and ventilation. Reflective areas on the front. Form fitting with elasticated cuffs to reduce drag.  
Womens: white, red, violet, blue.



## SKIGO MICROGRID SET

This windbreaker set with light functional fabric comes with several technical solutions. The jacket and pants are both fitted with a stretch material to give a firm, close fit and good breathing capacity across the entire back. The pants have a windproof front. Excellent freedom of movement.

Womens: violet, red, white, blue.



## SOFTSHELL PANTS

A softshell pant with windproof front. Full zippers along each leg allows for easy & quick changes. Knees are vented, waist can be cinched, high back to keep out wind. Form fitting. Comes with removable suspenders. Technically complete ski pants.



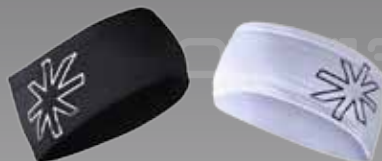
## MICROGRID VEST

Has a windproof front with full lycra stretch back for best fit & breathability. Reflective areas front & back for visibility. Reinforced seams for durability.



#### **THERMO DRINKBELT**

Insulated and washable container holds 1 liter of warm or cold drink. Large zippered pocket for wax, snacks, etc. All parts washable.



#### **HAT**

With Skigo logo.  
Colours: white and black

#### **HEADBAND**

With Skigo logo.  
Colours: black and white



#### **SKIGO RACING SUIT**

Skigo Racing Suit  
A 2-piece racing suit with optimal fit and functionality. Short zipper at the collar and a drawstring waist.



#### **SKIGO REFLECTIVE VEST**

For safe roller skiing and other activities. A high visibility vest with reflective edging. Form fitting with vented back for full freedom of movement while not interfering with technique. Available in different sizes.



ØYSTEIN "PØLSA" PETTERSEN  
NORWAY



# EXTRA

SKIBAG FOR 2-3 PAIRS

2012/13



JÜRGEN BRINK

3.38.41

HAT TRICK

BOINOR

BAKERIE

JÖRGEN BRINK  
SWEDEN



# SKATING SKIS

## SKIS:

---

1. Always purchase skis to match your body style and size.
2. Measure the camber to avoid skis that are too soft.
3. The bindings should be mounted at the balance point.
4. Grinding the skis should improve longevity especially after storage or base oxidization.
5. More base preparation results in better glide.

## BASE PREPARATION:

---

1. Brush the base in the glide direction with a brass or very-fine steel brush (hand or roto). Follow with fibretex in forward and backward direction. Both brushing and fibertexing help remove microhairs from the base and help open the base to receive wax.
2. Warm in one layer of Skigo Soft High Penetration basewax at a low temperature setting on your iron (about 115°C). Scrape with a plastic scraper while the wax is still warm. This will remove old wax and surface dirt; a clean base is a good base.
3. Warm in 1 to 2 layers of Skigo Soft. Let cool. Scrape and brush with a nylon brush between ironings.
4. Warm in 3 to 5 layers of Skigo Red glide wax (iron temp. 130°C). For racing use Skigo LF or HF Red glide wax. With each layer let it cool for 15 to 20 minutes before scraping and brushing.
5. If you are not going to ski right away, leave the last wax layer unscraped until use.
6. Scrape and brush the ski. Brush lightly after with a very-fine steel or brass brush to open the structure. Apply the wax of the day. Scrape and brush with a nylon brush.
7. Skis are now ready for use.
8. For racing and loppets use Skigo Graphite as the final base layer. With Skigo HF waxes use Skigo LF Graphite. This helps durability and cleanliness of the final wax layers. GOOD LUCK!



# CLASSIC SKIS

## SKIS:

---

1. Pick out skis and measure the camber carefully, but don't make it more difficult than it really is.
2. Ski camber is the most important test for getting a successful choice. Hard/stiff skis mean poor grip. Soft skis mean poor glide.
3. Bindings should be mounted at the balance point of the skis.
4. Lay out skis on an absolutely level and flat surface. Stand with both feet on the skis and an even balance of your weight on both skis. Ask someone to move a thin paper under the camber and mark out the length of the camber at the front and back. The back should not go behind the heel. Stride, as if skiing, over one ski with all your body weight and then conduct the paper test for the front and back again. You should have 10-15cm/4-6in under the foot. Now stride on the ball of your foot and the paper should be held under the ski (no open camber). The camber should be a minimum of 25cm/10in ahead of the toe.

## BASE PREPARATION:

---

Same base preparation for the glidezone as a skate ski.  
No preparation for the kickzone.

## QUICK TIPS:

---

1. Preferably use a wax iron. Clothing irons have uneven thermostats
2. Remember to keep the wax iron in motion
3. Expose the base structure before glide waxing with a quick, light brushing in the direction the ski will glide with a brass brush or very fine steel brush
4. In most cases too little brushing is done after scraping
5. Only use wax remover to clean the kickwax zone and sidewalls never use it on the glidezone
6. Clean the glidezone occasionally. Put on Skigo Soft with a wax iron and scrape while the wax is still warm. Let the skis cool and brush out all wax. Warm in the new wax
7. Cold conditions: fine structure. Warm conditions: coarse structure
8. Try to shorten the kickzone by 3-4cm / 1-1.5in when applying klister.
9. Remember: PRACTICE PRODUCES SKILL. Briefly try a waxing alternative during a training session so you know its function when you are competing
10. When storing skis for a time ALWAYS put on a wax in the glidezone without scraping after. This keeps the bases nice
11. Take care of your skis to get the most out of them.

## CLEANING:

1. The kickwax zone is best cleaned by scraping of the kickwax or klister with a plastic scraper. Apply wax remover. Wait for 20-30 seconds while the remover is working. Wipe it off with fiberlene or paper towel.
2. Glide zones may need cleaning a couple of times per season. Melt and drop Skigo Soft wax on the skis and scrape off while still warm. Dirt will float up to the surface and disappear during the scraping. Your skis are now ready for new glide wax again. Avoid wax remover on glide zones in order to avoid another base preparation. When skiing on klister it sometimes spreads to the glide zone. In this case you need to clean the glide zone with wax remover.



## KICKWAX APPLICATION:

1. Roughen the kickzone with 100 grit sandpaper so that it is lightly textured (not needed with every waxing). This helps the wax adhere to the ski better.
2. Use Skigo XC Base or Skigo XC Blue as the initial layer. Then add layers depending on the snow type.
3. Warm this initial layer in with a well cleaned wax iron.
4. Apply the kickwax chosen for the temperature and snow type.
5. 4-6 even and thin layers in the kickzone. Cork between layers.

## KLISTER APPLICATION:

1. Roughen the kickzone as done with regular kickwax.
2. Put klister on easily indoors where it is warm. Put on a thin layer of XC Blue or XC Violet klister as the initial layer. Then apply the klister of the day. Use a hot air gun or hair dryer to warm the klister in. Avoid open flame near skis as much as possible.
3. Don't be scared about applying enough klister; many apply it too thin.
4. Let the skis cool outdoor in the shade before you use.

DANIEL RICHARDSSON  
SWEDEN



# KICK WAX TABLE

Temperature	New Snow	Coarse Snow / Ice
<b>+10°C +50°F</b>	XC Violet Klister as a base (ironed) + XC Orange Klister. (Alt: HF Yellow Klister)	XC Violet Klister as a base (ironed) + XC Orange Klister mixed with a little Silver Klister. (Alt: HF Yellow Klister)
<b>+5°C +41°F</b>	See above	XC Violet Klister as a base (ironed) + XC Orange Klister mixed with Silver Klister. (Alt: HF Yellow Klister)
<b>+2°C +36°F</b>	HF Yellow (+5..-1°C) XC Violet Klister as a base (thin) + XC Universal Klister (Alternate: XC Orange)	XC Violet Klister as a base + XC Red Klister. (Alt: XC Orange) (Alt: HF Yellow +5..-1°C)
<b>+0°C +32°F</b>	XC Blue ironed as a base + LF Orange (XC Orange in pocket)	XC Violet Klister as base (thin) + HF Red +1..-3°C (Alt: XC Universal Klister)
<b>-1°C +30°F</b>	XC Blue ironed as a base (thin) + LF Violet or XC Red	XC Blue Klister as a base (thin) + HF Blue -1..-20°C (possibly mixed with HF Red +1..-3°)
<b>-2°C +28°F</b>	See above	XC Blue Klister as a base (thin) + HF Blue -1..-20°C
<b>-3°C +26°F</b>	XC Blue ironed as a base + HF Violet -2..-15°C (alt: HF Red mixed with XC Blue)	XC Base ironed as a base + HF Blue -1..-20°C
<b>-5°C +23°F</b>	XC Blue ironed as a base (thin) + HF Violet -2..-15°C (alt: XC Violet)	XC Base ironed as a base + HF Blue -1..-20°C (alt: XC Blue)
<b>-8°C..+18°F</b>	XC Blue ironed as a base (thin) + HF Violet -2..-15°C)	See above
<b>-12°C +10°F</b>	XC Blue ironed as a base (thin) + HF Violet -2..-15°C (alt: XC Green)	XC Base ironed as a base + HF Blue -1/-20
<b>-15°C +15°F</b>	XC Green	XC Base ironed as a base + XC Green (alt: HF Blue -1..-20°C especially at high humidity)

NOTE: When you use kick wax in the tin always apply in thin layers (4-6). Sooner several thin layers than one thick layer! Thin layers will apply more easily and have better durability and grip. The base wax should be warmed into a roughened kick zone. For more information refer to [www.ski-go.com](http://www.ski-go.com) about kick zone preparation. With dirty snow absolutely, always use LF & HF kickwaxes! Ski\*go fluoronated kickwaxes (LF & HF) are dirt repelling and improve the glide.

# GLIDE WAX TABLE

Snow Type Rel. Humidity Temp C/F	Coarse Snow Artificial Snow		Old Snow		New Snow	
	<60%	>60%	<60%	>60%	<60%	>60%
+15 .. +5 C +59 .. +41 F	Yellow HF + CM10	Yellow HF + CM10	Yellow HF + C22 or CM10	Yellow HF + C22 or CM10	Yellow HF + C22 powder	Yellow HF + C22 powder
+5 .. 0 C +41 .. +32 F	Yellow HF + CM10	Yellow HF + CM10	Yellow HF + C22 Fluid or CM10	Yellow HF + C22 Fluid or CM10	Yellow HF + C22 powder or fluid	Yellow HF + C22 powder or fluid
0 .. -4 C +32 .. +25 F	Violet HF mixed with Yellow HF + C44/7 Fluid	Violet HF mixed with Yellow HF + C44/7 Fluid	Red HF + C44/7 powder	Red HF + C44/7 or C105 powder	Orange HF + C105 powder	Orange HF + C105 powder
-4 .. -8 C +25 .. +18 F	Violet LF + C44/7 powder or fluid	Violet HF + C44/7 powder or fluid	Green LF mixed with Orange LF + C44/7 powder or C105 fluid	Green HF mixed with Orange HF + C44/7 fluid or powder or C105 powder	Blue LF + C55/99 Fluid	Blue HF + C105 powder
-8 .. -12 C +18 .. +10 F	Violet LF + P16	Violet LF + C105 fluid	Green HF + C380	Green HF + C105 fluid	Blue LF + C55/99 Fluid	Blue HF + C105 powder
-12 .. -25 C +10 .. -13 F	Green LF + P16	Green LF + P16 or C110	Green LF + C380	Green LF + C110 powder	Green HF + C380	Green HF + C110 powder

- Top with C22 Solid
- Top with C44 Solid
- Top with C105 Solid
- Top with C110 Solid
- HF = High Fluoro
- LF = Low Fluoro

Always use Graphite as the bottom underlayer because it is so durable. Not needed for races shorter than 2.5 km. Fluids gives a harder surface than powders. Fluids are for aggressive snow, and powders are for newer and finer structured snow.

"C22/CM10": use C22 power or CM10 (not both)

JÖRGEN BRINK

3.38.41

HAT TRICK

POINT

BAKED



## FLUORO BLOCK WAXING:

### Skigo C22, C44/7, C105, C110

1. Apply the wax of the day. HF preferred, for best results.
2. Crayon on the fluoro block.
3. Cork with a natural cork (hand or roto) so the coating becomes slightly warm.
4. Let the ski rest about 20 minutes.
5. Brush skis.
6. For better durability do points 2-5 again. Good for 5-10km.



2012/13

## FLUORO POWDER WAXING:

### Skigo C22, C44/7, C105, C110

1. Apply a layer of Skigo Graphite LF. Scrape and brush.
2. Apply a layer of appropriate Skigo HF wax next. Scrape and brush.
3. Sprinkle the fluoropowder evenly over the glide zone.
4. Tack down first with the waxiron. Then iron evenly and quickly the glidezone.
5. Let the skis rest 20 minutes; longer if possible is better.
6. The final brushing, with a horsehair and nylon brush, should happen as near as possible to being skied on. A maximum of 2-3 light passes with a very-fine steel brush.



## FLUORO FLUID WAXING:

### Skigo Fluid C22, C44/7, C55/99, C105, CM10

1. Apply a layer of Skigo Graphite LF. Scrape and Brush.
2. Apply a layer of appropriate Skigo HF glide wax. Scrape and brush.
3. Spread fluid on the glide zone and let dry for 5-10 minutes.
4. Cork with a natural cork (hand or roto) so the coating becomes slightly warm.
5. Let skis rest at least 20 minutes.
6. For the final brushing with Horsehair and Nylon brushes, be thorough (brush hard) because the fluid wax is very hard. If a fine Steel Brush is used then brush lightly 2-3 times between horsehair and nylon to open up the structure to achieve the best result.



CM10 Fluid – For regular races apply, let dry, cork and then brush. For sprint races apply, let dry and go.

*Be sure to have good ventilation when waxing.*

THERESE JOHAUG  
NORWAY



Alfasport  
Prospekt chdochnikov nr. 22/2  
S:t petersburg  
Russia

Ski wax.ca  
535 Blue Beech Blvd.  
Waterloo, ON, N2V 2T4  
Canada

Boulder Nordic Sport  
200 Anderson, Suite 5  
Portland  
USA

SIA AUTO SEV  
19.a Lasdonas street  
LV-4801 Madona  
Latvia  
(also for Estonia and  
Lithuania)

Nyc sport  
Dr. M. Horákové 182/110  
460 06 Liberec 6  
Czech Republic

Nordic Sport  
Jagtvej 195  
2100 Copenhagen  
Denmark

SportsAware ltd  
Ul. Manastirski Livadi  
1618 Sofia  
Bulgaria

Sportalen AS  
Rudssletta 35  
1351 RUD  
Norway

Duell  
MUSTASAARI  
Kauppatie 19  
65610 MUSTASAARI  
Finland

Pirineu Ski Service S.C.P  
C/ Joaquim Viola 31  
25700 La Seu d'Urgell  
Lleida (Spain)  
Telf: +34973114284  
Mobile: +34609416521  
info@rbt3nacions.com  
Spanien

MGB Sport  
PPH MGB MIROSLAW BURZYNSKI  
ul. Konarskiego 8  
01-355 Warszawa  
Poland

Sarl Altiplano  
ZAE Les Geymonds, route de machurons  
382 50 VILLARD DE LANSE  
France

ООО Екип-Сентер  
8-th. Tekstil'shikow Street 13., korp. 2  
Moscow  
Russia  
[www.ekip-center.ru](http://www.ekip-center.ru)

