

21  
22



ROTTREFELLA®

Connecting with winter since 1927









Vision: Inspire to an active lifestyle outdoors for the many.  
Secure top performances for the best.

# Creating winter wonders since 1927

We want to let everyone join in the endless joys of skiing. The very young, the almost ancient and everyone in between — from world class athletes to people coming straight from a comfy sofa. There are literally limitless ways you can enjoy yourself in the snow, and it doesn't matter if your blood is pumping through your veins when you're running up

a hill, if your adrenaline is rushing through your body speeding down a mountain, or if you're simply moving through the forest at your own pace, or perhaps even just enjoying a hot cup of cocoa. No matter if you're experiencing high speeds or calm tranquillity, the connection between you and the frozen element beneath your feet is so fluid and natural that you

don't even think about it. It's just there. It simply works.

We are Rottefella. Through our bindings, we have made winter accessible for everyone for nearly 100 years. And we will keep innovating for the next 100 years as well.





1927

Bror With invents the first split-toe binding.

1971

NN, Nordic Norm, 75 mm toe piece is introduced

1981

The first telemark binding. Super Telemark, is introduced

1985

NNN, New Nordic Norm system is developed

1989

NNN BC (Back Country) system is developed.

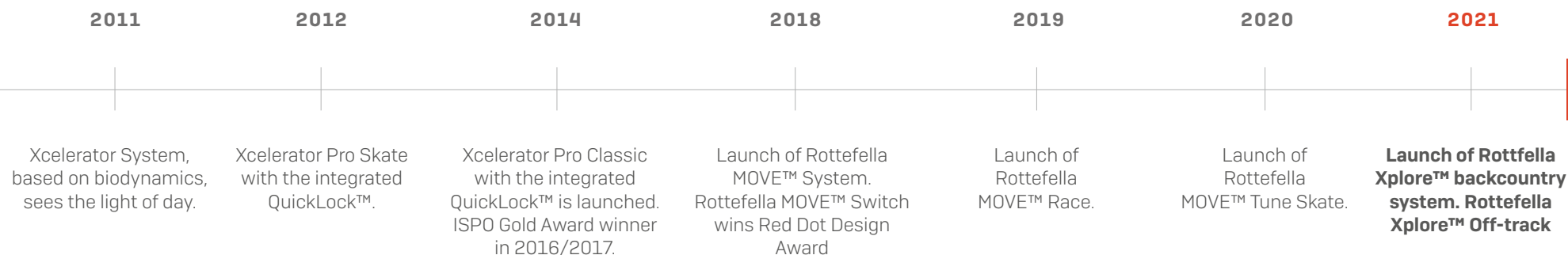
2004

NIS system with the unique move-your-binding functionality is introduced

2006

NTN, New Telemark Norm, system is launched





# The pure joy of connection

The first Rottefella bindings were a spur-of-the-moment invention. Bror With, a Norwegian mechanical engineer and inventor, came across a couple of rat-traps at a local hardware store. He immediately saw an alternative use for them; with some clever alterations they could become first-class bindings.

They were an instant success, and also became the birth of Rottefella as a company, setting the foundation of the philosophy that became our DNA: a never-ending quest for new ways, ideas and solutions. Looking back, this has set its mark on history; not only ours but that of skiing in general: the Nordic Norm in 1971, the New Nordic Norm in 1985, the

New Telemark Norm in 2006, and the Xcelerator System with integrated QuickLock in 2014. Over the years we have garnered other medals as well — in 2016, 89% of the winners in the World Cup used our bindings.

Today the MOVE™ System, launched as late as 2018, has been welcomed with open arms, being the first binding that can be moved without stepping out of the binding. ***Rottefella Xplore™ is our newest innovation. It is a new backcountry binding system designed to enhance stability, provide better comfort and increase mobility.***

It might seem like an enigma how such a tiny company from a small country on the outskirts of Europe could make such a huge impression on a global sport. The answer, of course, is because we are just that: A tiny company from a small country.

The distance from drawing-board to production of a prototype is measured in meters — the distance from prototype to trails is measured by stepping through the doors and into the woods outside. Our turn-around is really fast, just like our customers.





"The combination, wax skis and  
MOVE™ is brilliant. I adjust  
the binding and prolong the wax"

- Thomas Alsgard, winner of 15 Olympic medals.  
Previous manager of a ski team, Team LeasePlan &  
Sports commentator for the Norwegian Broadcasting Corporation.





**WAX SKIS / MOVE™** THE BEST WAY TO ADJUST FOR BETTER GRIP OR GLIDE



**SKIN SKIS / MOVE™** THE ONLY WAY TO ADJUST FOR BETTER GRIP OR GLIDE



**SKATE SKIS / MOVE™** FOR MORE STABLE SKIS AND SPEED

Adjust the bindings forwards and the contact with the snow increases, adjust the bindings backwards and the skis are lifted up and away from the snow, reducing traction.

# Waxless, waxable, skate or skin skis? Just MOVE, either way.

Waxing skis is a science. A number of variables will determine the outcome, such as the wax, the air temperature, the snow temperature and the structure – the difference between a great trip and an ordeal can be small. ***This is where the MOVE™ System changes the ball game. It allows you to move the waxing zone manually – even while you're skiing.*** Thanks to MOVE™, a ski outing on poorly waxed skis can become a nice experience. And a ski outing on perfectly waxed skis, fine-tuned with the MOVE™ System, will be amazing.

Skin skis take the wax out of the equation. They do not, however, take the benefit of MOVE™ out of the equation. The skins make the very foundation of the grip. ***By adjusting the bindings forward, the skin's contact with the snow increases, improving the grip. By moving the bindings backwards, the skis are lifted up from the snow and the traction is reduced, which improves the glide and increases the speed.*** This action that can be performed continuously, depending on the landscape you're moving through and the snow conditions.

Are you wondering how MOVE works on skate skis? MOVE™ Tune Skate is optimal for all snow conditions. When the snow is hard and packed you can move the binding forward for more stable skis that are easier to steer. On looser snow, however, you move can the binding backwards so the skis float better on top of the snow. What's not to like?

MOVE™ fits all skis. By choosing the assembly that fits the mounting plate, anyone can move their binding to improve their grip or glide, or get better control, without taking off their skis.

MADE IN NORWAY



7





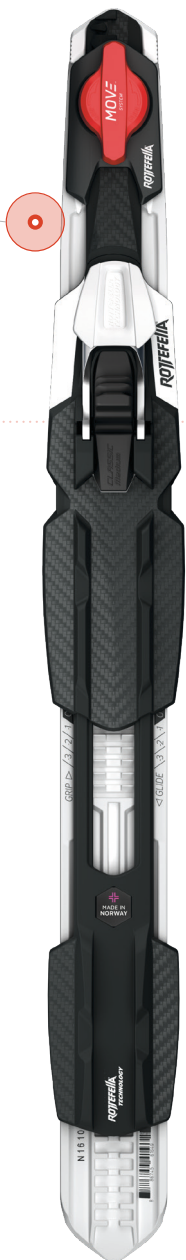
What are you looking for? The choice between better grip and glide or do you really want to be able to fine-tune your skate skis – what ever your needs, you will find a MOVE™ that suits you.

## A MOVE for everyone!

We want everybody to be able to feel how amazing it is when everything simply works. We have poured our hearts and souls into this; immeasurable hours and hundreds of miles during our trials and tests, both by ourselves and by world class skiers. [We know quite a few.]

*The result is the MOVE™ system, a ski-binding that's flexible in every sense of the word.* It lets you be the master of the grip, glide, speed and control you have on the tracks, by simply adjusting the binding position on the skis for either more or less contact with the snow surface. The end result is both flexible and accessible for everyone.

NB! Skis with a 3D profile close to the mounting plate without a MOVE Interface cannot be used together with MOVE™ as the adapter's glue surface will not be affixed correctly.



4 POSITIONS  
FOR GRIP OR GLIDE

### ROTTEFELLA MOVE™ SWITCH

FOR BETTER  
GRIP OR GLIDE

Rottefella MOVE™ Switch provides better grip and glide, even when snow conditions change, the wax rubs off or the weight load changes, for example when using a backpack or pulk.

For all classic skis. \*



2 POSITIONS  
FOR QUICK MOVES

### ROTTEFELLA MOVE™ RACE

FOR MAXIMUM GLIDE  
IN SECONDS

Rottefella MOVE™ Race provides immediate glide and prolongs the effect of the ski wax.

For all classic skis. \*



9 POSITIONS  
FOR FINE-TUNING

### ROTTEFELLA MOVE™ TUNE SKATE

FOR OPTIMAL SKIS  
IN ALL CONDITIONS

Rottefella MOVE™ Tune Skate gives you the opportunity to fine-tune your bindings according to snow conditions, the characteristics of your skis, and your technique

For all skate skis. \*

MADE IN NORWAY



9



### NIS 3.0 MOUNTING PLATE ROTTEFELLA MOUNTING PLATE

Mounting plates with integrated MOVE Interface allows you to mount MOVE bindings directly on to the skis without the use of an adapter.



**MADSHUS**  
**PELTONEN**  
**KASTLE**  
FOR SKIS SINCE 1922

**NIS 3.0  
MOUNTING PLATE**  
Premounted

**salomon**  
**ATOMIC**  
**SKITRAB**  
QUALITY ON THE SNOW

**ROTTEFELLA  
MOUNTING PLATE**  
Screw



**ROSSIGNOL**  
**ATOMIC**

**IFP  
MOUNTING PLATE**  
Premounted

**NIS 1.0  
MOUNTING PLATE**  
Premounted  
on older skis across  
all major brands.

All MOVE™ kits are color coded so you can easily choose the right MOVE™ binding to the right ski style and mounting plate.



## It all starts with the mounting plate

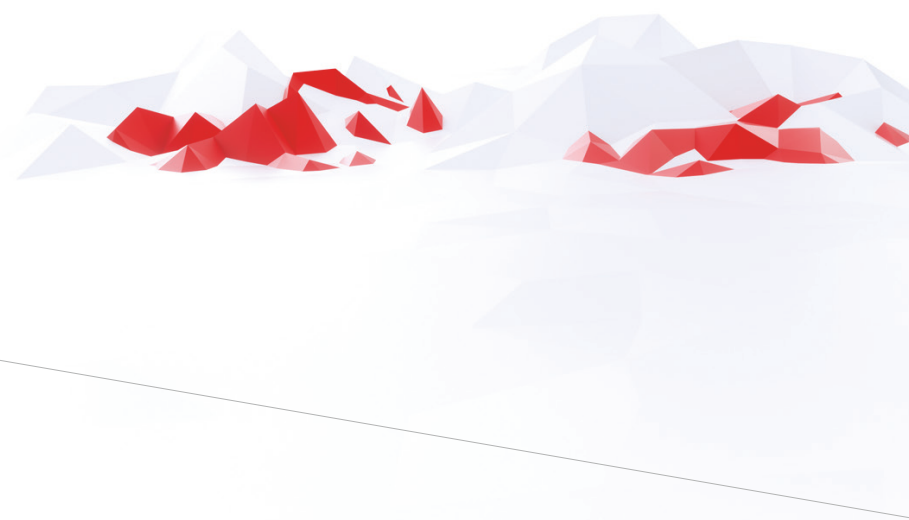
90% of all skis, whatever the brand, have a mounting plate. They either have a premounted or a screwed mounting plate. Whatever the mounting plate, MOVE™ has a binding that fits. To the left you can see the existing mounting plates on the market today. Some have the integrated MOVE™ interface, while others will need an adapter.

We have colour coded the kits to make it easier to choose the right kit for your mounting plate. For example, the kits with the green colour code fit Fischer and Rossignol skis with an IFP\* mounting plate, and the kits with the “red” colour coding fit skis with NIS 3.0 mounting plate, like Madshus, Peltonen and Kastle skis. Skis with the Rottefella Mounting Plate with the MOVE™ interface fit all predrilled Salomon and Atomic skis.

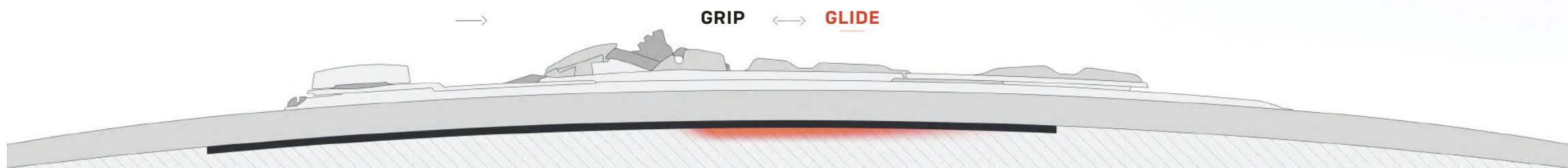
Today, many people have skis with NIS 1.0 mounting plates in their homes, from different ski brands. These skis will need the kit with the “pink” colour code. So basically, follow the colour coding and you can’t go wrong. If you’re in doubt, feel free to ask us.

There is a MOVE for everyone.



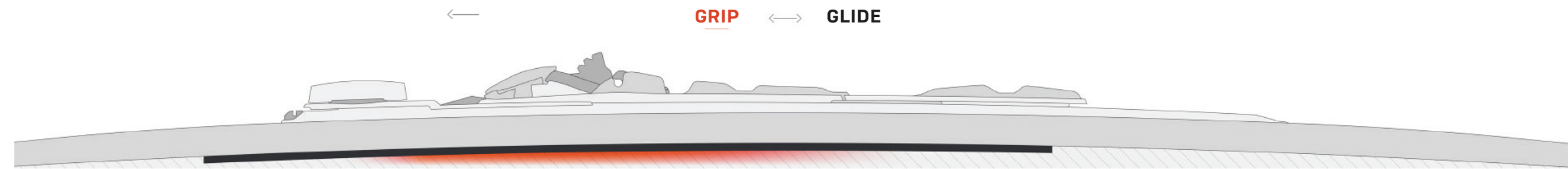


## MOVE™ POSITION



GRIP ↔ GLIDE

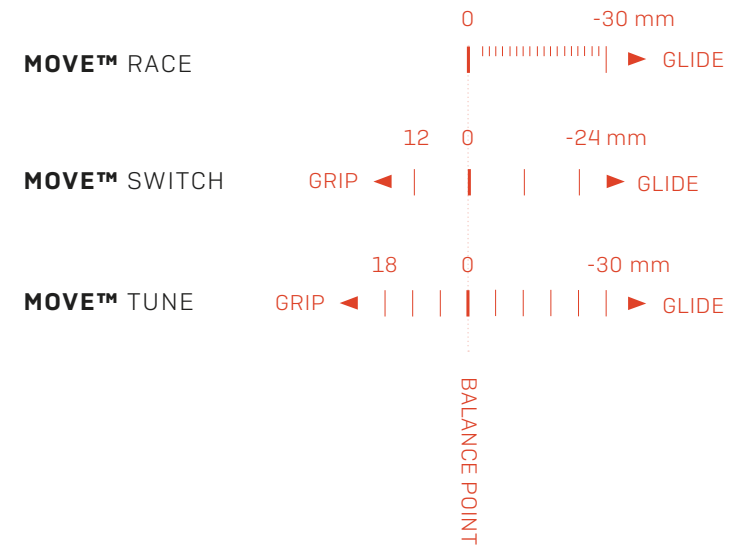
WAX TENSION PRESSURE



GRIP ↔ GLIDE

WAX TENSION PRESSURE

MOVE™ changes the skis characteristics by increasing or decreasing the contact with the snow.



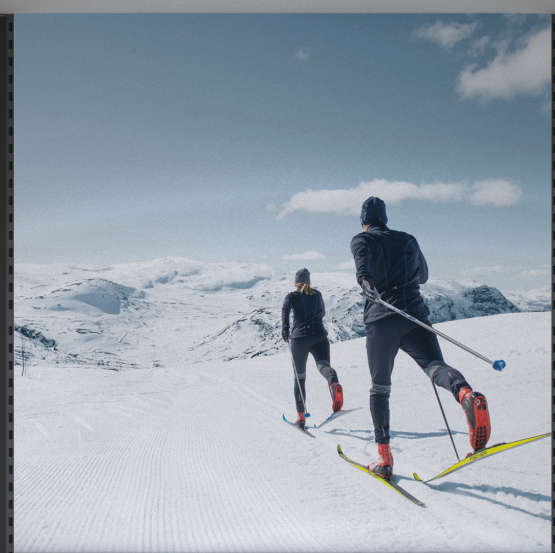
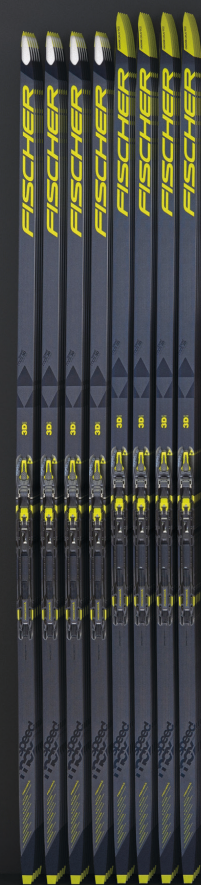
## What does MOVE actually do?

Skiing is ruled by the laws of physics, based on a natural distribution of weight and balance. Walking up a steep hill, crossing a frozen field or gliding down a mountainside — every motion you make changes the contact between the skis and the surface beneath them. The ideal point of contact, the nature of grip, glide and friction. It makes sense that the positions of your bindings should be able to change

as well. ***And that's why we designed the MOVE™ System, as it changes the ski's characteristics.*** MOVE™ Race is for those who chase seconds, MOVE™ Switch is for those who want a great skiing experience, and MOVE™ Tune is for those who want to fine-tune their skis to any snow conditions.

With the Rottefella MOVE™ system, we have developed what we honestly believe will give you the very best experience while skiing. It's the only system on the market today that allows you to "change gears" while skiing, and do it with ease. Simply turn or flip the handle.





# VELG DIN ROTTEFELLA MOVE.

MOVE™ gjør det mulig å flytte bindingen på en rask og enkel måte uten å ta av deg skiene. MOVE™ gir deg bedre skopplevelser og øker skiprestasjonene.



ROTTEFELLA MOVE™ PASSER ALLE SKI





Choose the ski style

1



Choose the binding

2



Choose the MOVE™ Unit

3



# The smart future is Pick&Mix!

We innovate constantly, that's what we do. We do it so that ski lovers can experience an even better skiing experience and performance.

Our first MOVE™ binding, MOVE™ Switch, has been a great success, so we kept on developing the

MORE™ system. The next year MORE™ Race was launched for those chasing seconds. This year we launched MORE™ Tune Skate. And next year we have another binding up our sleeve. We aim for further innovations, that's what we do. And that is why we have split up the kits so that our customers can put together their own MORE™ binding

according to their personal preferences.

Just by following a few simple steps you can have exactly the binding you need for that particular pair of skis, for that particular ski trip.



We work hard on a daily basis to innovate so that skiers — both new and the ambitious — can experience better skiing. Pick&Mix allows MOVE™ binding assembly that suits the skier

## Pick&Mix

1

Which mounting plate do you have?



**NIS 3.0 MOUNTING PLATE**  
Premounted with MOVE™ Interface

MADSHUS PELTONEN KASTLE



**ROTTEFELLA MOUNTING PLATE**  
Screw plate with MOVE™ Interface

salomon S ATOMIC GOREXU TRAB QUALITY ON THE SNOW



**NIS 1.0 MOUNTING PLATE**  
Premounted without MOVE™ Interface

Premounted on older skis across all major brands.



**IFP\* MOUNTING PLATE**  
Premounted without MOVE™ Interface

ROSSIGNOL

2

Do you need an adapter?



**NIS 1.0 ADAPTER**  
Art.no bulk: 10200397



**IFP\* ADAPTER**  
Art.no bulk: 10200396

3

Choose a compatible  
MOVE™ binding



**MOVE MANUAL NIS/RMP Skate**  
Art.no bulk: 10200393



**MOVE MANUAL NIS/RMP Classic**  
Art.no bulk: 10200394



**MOVE MANUAL IFP\* Skate**  
Art.no bulk: 10200391



**MOVE MANUAL IFP\* Classic**  
Art.no bulk: 10200392

4

Choose a  
MOVE™ Unit



**MOVE SWITCH UNIT**  
Art.no: 10200389



**MOVE RACE UNIT**  
Art.no: 10200385



**MOVE TUNE UNIT**  
Art.no: 10200390



MADE IN NORWAY



17



# IFP\* Pick&Mix / Fischer and Rossignol



Mount a MOVE™ binding and MOVE™ Unit to an IFP\* mounting plate and experience better skis without having to take them off.



## FOR CONNECTING BETWEEN MOUNTING PLATE AND MOVE™ UNITS

### ROTTEFELLA ADAPTER IFP\*

Version: Classic / Skate

Moveable: MOVE™

Mounting system:

IFP\*Art. no bulk: 10200396



## FOR BETTER GRIP OR GLIDE



### ROTTEFELLA MOVE™ SWITCH UNIT

Changeable flex: Yes

Version: Classic

Moveable: MOVE™

Mounting system: NIS, IFP\*, RMP

Fits with NIS, IFP\*, RMP: 10200389





### ROTTEFELLA MOVE™ MANUAL IFP\* SKATE

Changeable flex: Yes

Version: Skate

Moveable: MOVE™

Mounting system: IFP\*

Art.no bulk: 10 200391



### ROTTEFELLA MOVE™ MANUAL IFP\* CLASSIC

Changeable flex: Yes

Version: Classic

Moveable: MOVE™

Mounting system: IFP\*

Art.no bulk: 10200392



### FOR MAXIMUM GLIDE IN SECONDS



### ROTTEFELLA MOVE™ RACE UNIT

Changeable flex: Yes

Version: Classic

Moveable: MOVE™

Mounting system: NIS, IFP\*, RMP

Fits with NIS, IFP\*, RMP: 10200385



### ROTTEFELLA MOVE™ TUNE UNIT

Changeable flex: Yes

Version: Classic

Moveable: MOVE™

Mounting system: NIS, IFP\*, RMP

Fits with NIS, IFP\*, RMP: 10200390



MADE IN NORWAY



19



# NIS/RMP - Pick&Mix / for NIS and skis with RMP mounting plate



Mount a MOVE™ binding and MOVE™ Unit to NIS 3.0 or RMP mounting plate with MOVE™ Interface and experience better skis without having to take them off.

**MADSHUS**  
FOR YOUR COMFORT AND SAFETY

**PELTONEN**

**KASTLE**  
FOR SKIERS SINCE 1924

**salomon** S

**ATOMIC**

**OSKI TRAB**  
QUALITY ON THE SNOW



**FOR CONNECTING BETWEEN NIS 1.0  
MOUNTING PLATE AND MOVE™ UNITS**

## ROTTEFELLA ADAPTER NIS\*

Version: Classic / SKate

Moveable: MOVE™

Mounting system: NIS 1.0

Art. no bulk: 10200397



**FOR BETTER GRIP  
OR GLIDE**



## ROTTEFELLA MOVE™ SWITCH UNIT

Version: Universal

Moveable: MOVE™

Mounting system: NIS, IFP\*, RMP

Art. no: 10200389





### ROTTEFELLA MOVE™ MANUAL NIS SKATE

Changeable flex: Yes

Version: Skate

Moveable: MOVE™

Mounting system: NIS/RMP

Art.no bulk: 10200393



### ROTTEFELLA MOVE™ MANUAL NIS CLASSIC

Changeable flex: Yes

Version: Classic

Moveable: MOVE™

Mounting system: NIS/RMP

Art.no bulk: 10200394



### FOR MAXIMUM GLIDE IN SECONDS



### ROTTEFELLA MOVE™ RACE UNIT

Version: Universal

Moveable: MOVE™

Mounting system: NIS, IFP\*, RMP

Art. no: 10200385



### ROTTEFELLA MOVE™ TUNE UNIT

Version: Universal

Moveable: MOVE™

Mounting system: NIS, IFP\*, RMP

Art. no: 10200390



MADE IN NORWAY



21



# MOVE™ Kits – includes all you need to mount MOVE™ bindings on skis

Today the MOVE™ family consists of three bindings, each with specific advantages that allow skiers to enjoy their skiing experience even more.



## ROTTEFELLA MOVE™ SWITCH KIT

Changeable flex: Yes

Version: Classic

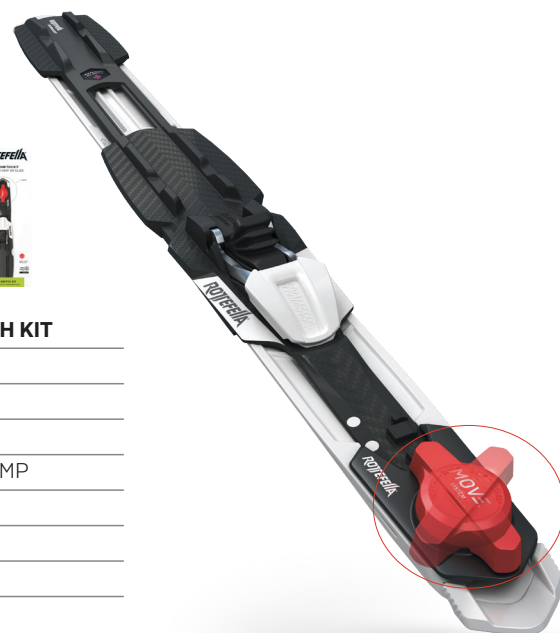
Moveable: MOVE™

Mounting system: NIS, IFP\*, RMP

Fits with NIS 3: 10200363

Fits with NIS 1: 10200352

Fits with IFP\*: 10200351



## ROTTEFELLA MOVE™ RACE KIT

Changeable flex: Yes

Version: Classic

Moveable: MOVE™

Mounting system: NIS, IFP\*, RMP

Fits with NIS 3: 10200380

Fits with NIS 1: 10200379

Fits with IFP\*: 10200378



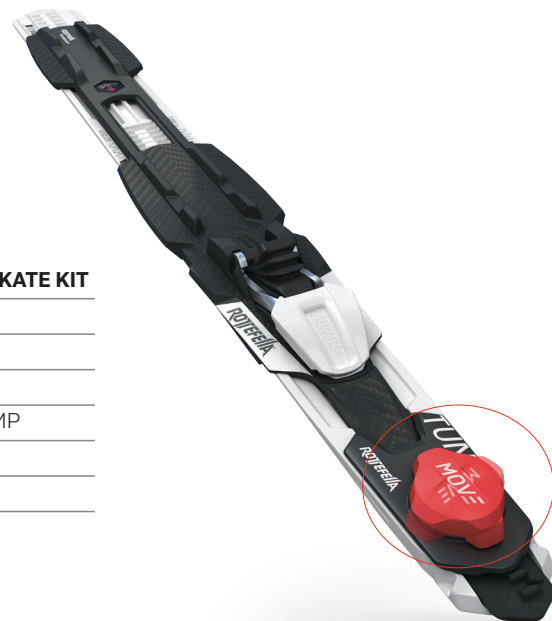
Go to [Rottefella.com](https://www.rottefella.com) to see mounting videos for all MOVE™ Binding kits.

## MOVE™ SWITCH FOR NIS 3 MOUNTING PLATE.

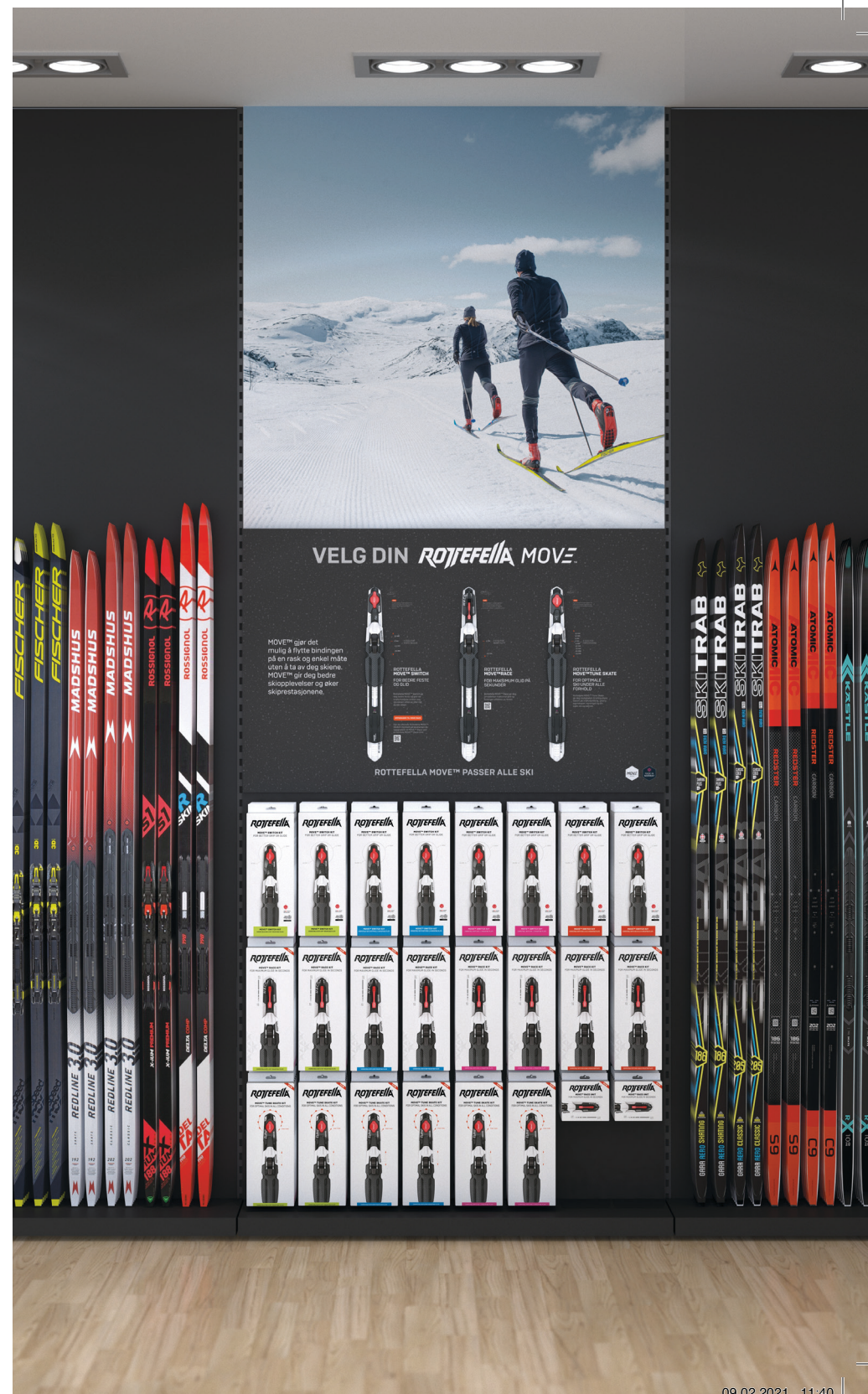


### ROTTEFELLA MOVE™ TUNE SKATE KIT

Changeable flex: Yes  
Version: Skate  
Moveable: MOVE™  
Mounting system: NIS, IFP\*, RMP  
Fits with NIS 1: 10200384  
Fits with IFP\*: 10200383



\*IFP is the property and technology of Fischer Sports GmbH.

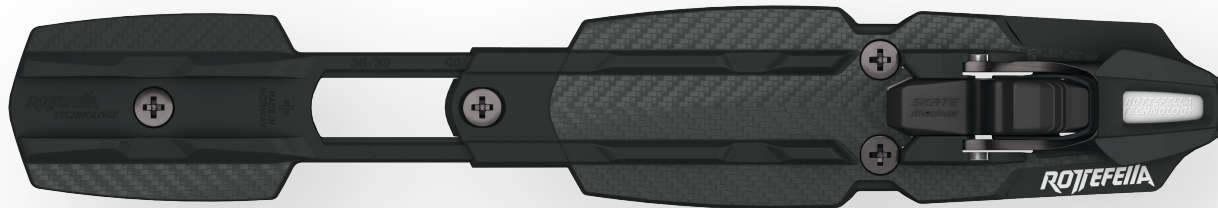








Rottefella Sport Screw can be  
screwed directly onto all flat skis.



# Probably the lightest screw binding in the world!

This year we present Rottefella's Sport Screw, probably the best and lightest screw binding brought to the market today. It is the ultimate screw binding with its light weight, high durability and easy mountability.

It uses an interchangeable flex, the "motor" in all Rottefella's bindings, plus a locking mechanism and a clean design. All of these advantages that Rottefella is famous for have been placed in a screw binding that's perfect for all flat skis.









The newest binding within the Rottfella QuickLock™ family!



# Rottfella Quicklock for IFP\* fits all skis with IFP\* mounting plate!

Rottfella's QuickLock™ has been one of our most successful bindings in Rottfella's history. The QuickLock™ enables skiers to move their bindings, without having to use tools, for better grip or glide. The binding has also been designed for maximum

stability and minimum snow packing. With the new Rottfella QuickLock™ for \*IFP, all skis with a premounted \*IFP mounting plate can also enjoy these advantages.





### ROTTEFELLA QUICKLOCK™ FOR IFP\*

Weight: 180 g

Changeable flex: Yes

Skate / Classic version

Moveable: QuickLock™

Mounting system: IFP\*

Shoe norm: NNN

Art.no. skate bulk: 10200354

Art.no. classic bulk: 10200356



### XCELERATOR PRO SKATE

Weight: 195 g

Changeable flex: Yes

Skate version

Moveable: QuickLock™

Mounting system: NIS

Shoe norm: NNN

Art.no. skate bulk: 10200326



### XCELERATOR 2.0

Weight: 188 g

Changeable flex: Yes

Skate / Classic version

Moveable with NIS key

Mounting system: NIS

Shoe norm: NNN

Art. no. skate bulk: 10200329

Art. no. classic bulk: 10200331



### XCELERATOR JUNIOR

Weight: 203 g

Changeable flex: Yes

Skate / Classic version

Moveable with NIS key

Mounting system: NIS

Shoe norm: NNN

Art. no. skate bulk: 10200186

Art. no. classic bulk: 10200188





### XCELERATOR PRO CLASSIC

Weight: 195 g  
Changeable flex: Yes  
Classic version  
Moveable: QuickLock™  
Mounting system: NIS  
Shoe norm: NNN  
Art.no. classic bulk: 10200328



### ROTTEFELLA PERFORMANCE BLACK

Weight: 189 g  
Changeable flex: Yes  
Skate / Classic version  
Moveable: NIS key  
Mounting system: NIS  
Shoe norm: NNN  
Art. no.skate bulk: 10200335  
Art. no.classic bulk: 10200338



### ROTTEFELLA SPORT SCREW

Weight: 170 g  
Changeable flex: Yes  
Skate / Classic version  
Moveable: NO  
Mounting system: NIS  
Shoe norm: NNN  
Art.no. skate bulk: 10200404  
Art. no.classic bulk: 10200405



NEW

Moveable bindings from Rottefella were first launched in 1997. With the NIS key, cross-country skiers could enjoy skiing with better grip or glide by moving the binding.

MADE IN NORWAY



29



### ROTTEFELLA TOURING AUTO BLACK

Weight: 279 g

Classic version / Step in

Moveable: NIS key

Mounting system: NIS

Shoe norm: NNN

Art.no. bulk: 10200197



### ROTTEFELLA BASIC

Weight: 178 g

Classic version / Step in

Moveable: NIS key

Mounting system: NIS

Shoe norm: NNN

Art.no. bulk: 10200150



### ROTTEFELLA ROLLERSKI

Weight: 270 g

Changeable flex: Yes

Skate / Classic version

Mounting system: Screw

Shoe norm: NNN

Art.no. skate bulk: 10200279

Art.no. classic bulk: 10200280



### ROTTEFELLA START BLACK

Weight: 185 g

Moveable: No

Step in / Easy access

NIS System

NNN Technology

Art. nr bulk: 10200157







#### ROTTEFELLA BACK COUNTRY AUTO

Weight: 444 g  
 Changeable flex: Yes  
 Mounting system: Screw / Step in  
 Shoe norm: NNN BC  
 Art. no. bulk: 10200175



#### ROTTEFELLA BACK COUNTRY MAGNUM

Weight: 529 g  
 Changeable flex: Yes  
 Mounting system: Screw  
 Shoe norm: NNN BC  
 Art. no. Bulk: 10200179



#### ROTTEFELLA BACK COUNTRY MANUAL

Weight: 472 g  
 Changeable flex: Yes  
 Mounting system: Screw  
 Shoe norm: NNN BC  
 Art. no. bulk: 10200177



#### ROTTEFELLA 75 MM WITH CABLE / SUPER TELEMARK

Weight: 530 g / 410 g  
 Toe binding  
 Screw binding  
 75 mm 3 pin

#### ROTTEFELLA 75 MM WITH CABLE:

LONG Art.no.singelpack : 10100074  
 Shoe size: 42 - 49  
 SHORT Art.no.singelpack: 10100075  
 Shoe size: 36 - 44

#### SUPER TELEMARK

Art.no.singelpack: 10200159



MADE IN NORWAY 





# Rottefella mounting plates

Underneath you will find the most used mounting plates on the market today. Our bindings are compatible with one or more plates, so we have made a coding system to allow you to navigate easier. Each binding has a symbol indicating which mounting plate fits. If you have any questions, have a look on Rottefella.no or call us and we will help you.



## ROTTEFELLA NIS 3.0 MOUNTING PLATE

N3

Weight: 44 g

Moveable clicks: 7

Mounting system: NIS

Mounting plate: Rottefella MOVE™ Interface premounted plate



## ROTTEFELLA NIS 1.0 MONTERINGSPLATE

N1

Weight: 30 g

Moveable clicks: 7

Mounting system: NIS

Mounting plate: premounted



## SCREW BINDINGEN

SB



## ROTTEFELLA MOUNTING PLATE

RMP

Weight: 60 g

Moveable clicks: 6

Mounting plate: screw

Art no. 40800063



## ROTTEFELLA START MOUNTING PLATE

ST

Weight: 103 g

Moveable clicks: 0

Mounting plate: screw

Art.no. ski length 90-130: 40800029

Art.no. ski length 130-170: 40800022



## ROTTEFELLA TOURING MOUNTING PLATE

TR

Weight: 133 g

Moveable clicks: 0

Mounting plate: screw

Art no. 40200016

## Other compatible mounting plate



## IFP\* MONTERINGSPLATE

IFP\*

Moveable clicks: 7

Monteringssystem: IFP\*

Mounting plate: premounted

MADE IN NORWAY



33



New[s]miles in  
familiar places



ALFA FREE A/P/S GTX  
WITH XPLORE™ SYSTEM



ROTTEFELLA XPLORE™  
OFF-TRACK BINDING

Rottefella Xplore™ is new backcountry binding system, which gives better mobility when walking and more stability – generally a better skiing experience across, uphill and downhill in the mountains and in the woods, especially off-track. Experience your local area in a whole new way. Discover more and more often, with Rottefella Xplore™.

**ROTTEFELLA XPLORE**





Back  
Country



#### ROTTFELLA XPLORE OFF-TRACK

Weight: 374 g

Back Country

Screw binding

Art.no.: 10200398

NEW

**ROTTFELLA**  
**XPLORE**

## A brand new backcountry system for better mobility, stability and a lot more fun!

Rottfella Xplore™ is a new backcountry binding system which will greatly improve your skiing experience; with better mobility when skiing across all types of terrain and greater stability during downhill skiing, giving you an increased sense of confidence and enjoyment of back-country skiing.

Rottfella Xplore™ Off-Track is the first binding within the Rottfella Xplore™ system with the integrated SpringPin™ technology. It's the Spring-Pin™ location in the binding that's the key to more stability and mobility and for a safer and more comfortable exploration off tracks. Enjoy your neighbourhood in a whole new way. Discover more, and more often, with Rottfella Xplore™.

MADE IN NORWAY



35

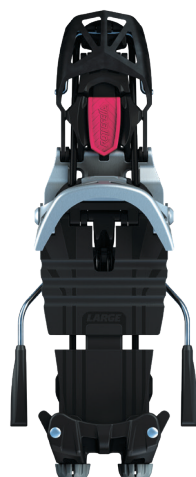






Telemark NTN bindings gives an immediate energy transfer from boot to edge. Spring technology provides an even, smooth and adjustable pressure in front when skiing.

Telemark



#### ROTTEFELLA FREEDOM

Weight: 1500 g

Moveable: NO

Screw binding

Art.no.long 110 mm: 1010048

Art.no.short 110 mm: 1010049

Art.no.long 95 mm: 1010066

Art.no.short 95 mm: 1010067

OFF  
PISTE  
SKIING



#### ROTTEFELLA FREEDOM COLOR

Weight: 1500 g

Moveable: NO

Screw binding

Art.no.long 110 mm: 1010062

Art.no.short 110 mm: 1010063

Art.no.long 95 mm: 1010070

Art.no.short 95 mm: 1010071



#### ROTTEFELLA FREERIDE

Weight: 1850 g

Moveable: NO

Screw binding

Art.no.long 110 mm: 1010050

Art.no.short 110 mm: 1010051

Art.no.long 95 mm: 1010064

Art.no.short 95 mm: 1010065

GROOM  
PISTE  
SKIING



#### ROTTEFELLA FREERIDE COLOR

Weight: 1850 g

Moveable: NO

Screw binding

Art.no.long 110 mm: 1010056

Art.no.short 110 mm: 1010057

Art.no.long 95 mm: 1010068

Art.no.short 95 mm: 1010069

MADE IN NORWAY



37

# Accessories



## **XCELERATOR FLEXOR SKATE MEDIUM**

Version: Skate
Interchangeable: Yes
Mounting system: NIS, IFP*, RMP
Art. no. singelpack: 40800004



## **XCELERATOR FLEXOR SKATE HARD**

Version: Skate
Interchangeable: Yes
Mounting system: NIS, IFP*, RMP
Art. no. singelpack: 40800015



## **XCELERATOR FLEXOR SKATE SOFT**

Version: Skate
Interchangeable: Yes
Mounting system: NIS, IFP*, RMP
Art. no. singelpack: 40800013



## **XCELERATOR FLEXOR CLASSIC MEDIUM**

Version: Classic
Interchangeable: Yes
Mounting system: NIS, IFP*, RMP
Art. no. singelpack: 40800003



## **XCELERATOR FLEXOR CLASSIC HARD**

Version: Classic
Interchangeable: Yes
Mounting system: NIS, IFP*, RMP
Art. no. singelpack: 40800016



## **XCELERATOR FLEXOR CLASSIC SOFT**

Version: Classic
Interchangeable: Yes
Mounting system: NIS, IFP*, RMP
Art. no. singelpack: 40800014

All skiers are different, with different styles, techniques and personal preferences.

Rottefella offers a range of accessories for our binding products, from riser plates, flexors, back country ski boot leash and colorful handles for childrens bindings. Whatever your personal preferences, Rottefella bindings can be tailored to your style.



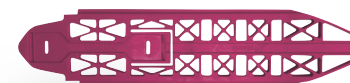
## **XCELERATOR HANDLES RETAIL**

Version: Classic
Interchangeable: Yes
Mounting system: NIS, IFP*, RMP
Art. no. singelpack: 40800053



## **START HANDLES RETAIL**

Version: Classic
Retail box: 16 paors
Mounting system: NIS
Art. no. singelpack: 40800020



## **XCELERATOR SKATE SPACER MAGENTA**

Version: Classic / Skate
Mounting system: NIS
Art. no. singelpack: 40800005

Didn't find what you were looking for? Have a look at [Rottefella.com](https://www.rottefella.com) to find all our accessories.



#### NTN FREERIDE POWER TUBES MEDIUM

Product: Telemark  
Interchangeable: Yes  
Mounting system: NTN  
Art. no. singelpack: 408000008



#### NTN FREERIDE MOUNTINGPLATE/HEEL SET

Product: Telemark  
Interchangeable: Yes  
Mounting system: NTN  
Art. no. singelpack: 208000085



#### NTN FREEDOM POWERBOX

Product: Telemark  
Interchangeable: Yes  
Mounting system: NTN  
Art. no. singelpack: 208000081



#### NTN FREEDOM POWERBOX

Product: Telemark  
Interchangeable: Yes  
Mounting system: NTN  
Art. no. singelpack: 208000080.



#### NTN FREERIDE POWER TUBES SOFT

Product: Telemark  
Interchangeable: Yes  
Mounting system: NTN  
Art. no. singelpack: 408000007



#### NTN FREERIDE SPACER

Product: Telemark  
Mountable: Yes  
Mounting system: NTN  
Art. no. singelpack: 20200407



#### ROTTEFELLA XPLORE FLEX HARD

Product: Back Country  
Art.no: 10200399



#### ROTTEFELLA XPLORE FREE PIVOT PLATE

Product: Back Country  
Art.no: 10200400



#### NTN FREERIDE SKI BRAKE

95mm / art. no: 208000010  
110mm / art. no: 208000011  
125mm / art. no: 208000012



#### NTN FREEDOM SKI BRAKE

95mm / art. no: 208000082  
110mm / art. no: 208000083  
125mm / art. no: 208000084

#### ROTTEFELLA XPLORE FLEX HARD

Product: Back Country  
Art.no: 10200401  
*NB! Product not ready when printed.*



# Jiggs / Insert



We have a range of inserts for mounting Rottefella bindings precisely onto skis. Have a look to the right and choose which ones you need or order the jig with all inserts included.



## ROTTEFELLA BASIC INSERT

Weight: 103 g

Art.no.: 40800024

For: Basic / Start / Step-In

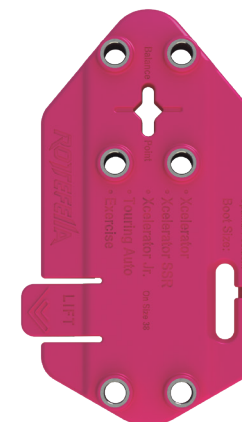


## ROTTEFELLA ROLLERSKI INSERT

Weight: 105 g

Art.no.: 40800055

For: Rollerski / Sport Screw

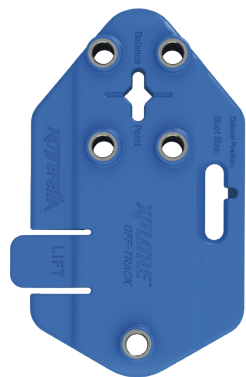


## ROTTEFELLA XCELERATOR INSERT

Weight: 103 g

Art.no.: 40800023

For: Xcelerator / Touring / Exercise



#### ROTTEFELLA BACK COUNTRY INSERT

Weight: 117 g

Art.no.: 40800025

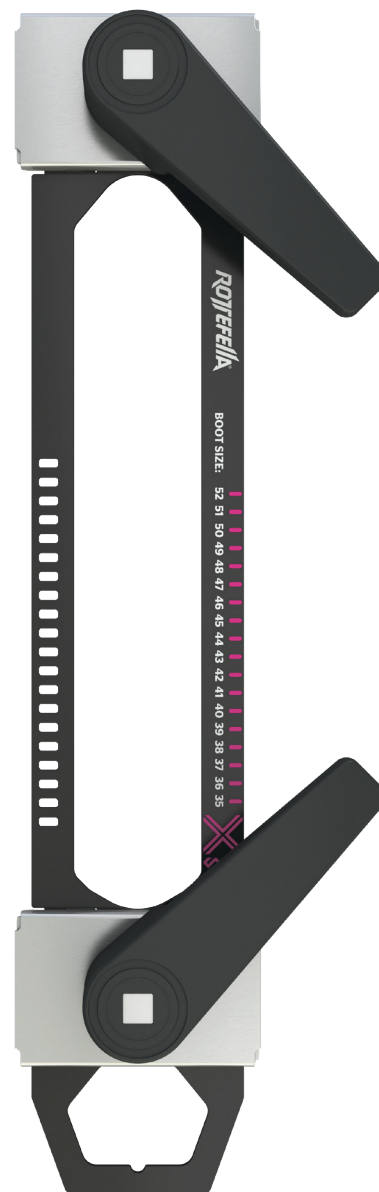
For: Back Country

#### ROTTEFELLA XPLORE INSERT

Weight: 102 g

Art.no.: 40800066

For: Xplore



#### ROTTEFELLA JIGG WITH INSERTS

Weight: 1020 g

Art.no.: 10200144

Covers: all inserts

MADE IN NORWAY



41



## Notes

We strive to meet all our customers needs. Don't hesitate getting in touch for help or for answering any question, remember there is no such things as a stupid question!

This image shows a blank sheet of white paper with horizontal ruling lines. The lines are evenly spaced and run across the width of the page. There are no margins, text, or other markings on the paper.

[illegible]



**ROTTEFELLA®**

rottefella.no

Made in Norway 